

Using Internet Explorer 10 with Windows 8 on a Non-Touch Device

Internet Explorer 10 in Windows 8 supports two different browsing experiences: one that is optimized for touch devices (known as the Metro app) and another for the familiar desktop browser for non-touch devices. The app version of IE 10 doesn't run many of the plugins necessary for a successful desktop browsing experience. **However, the app version is the default in the new Windows 8 Metro interface.**

"Metro" Interface:



"Classic/Desktop" Interface:



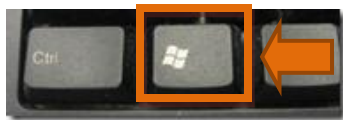
Thus, in order to use Blackboard on a Windows 8 computer/laptop, users who use Internet Explorer have two choices:

1. Switch to the Classic (a/k/a Desktop mode) interface every time you want to use Internet Explorer with Blackboard (and then switch back to the Metro interface).
2. Change the default behavior of the Internet Explorer tile in the Metro interface to use the **desktop** version of Internet Explorer (instead of the **app** version that is the default when in Metro mode).

OPTION 1: Toggle back and forth between the Metro and Classic/Desktop interfaces.

Remember to launch the Classic/Desktop interface before launching Internet Explorer.

To display the Windows 8 "Desktop/Classic" interface when you are in the Metro interface, press the Windows key on your keyboard:



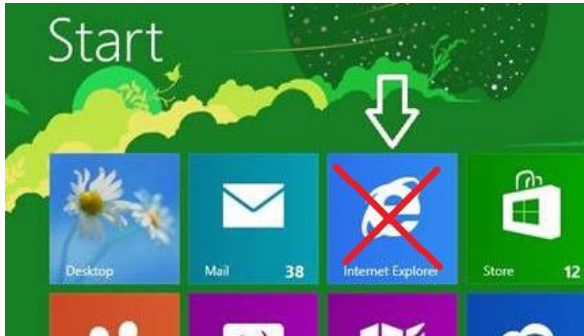
To switch to the Metro interface, when you are in the Classic/Desktop interface, move the mouse cursor to the lower left corner until the Start icon pops up, click on the icon:



OPTION 2: Make the *desktop* version of Internet Explorer the default, even when in the Metro interface.

NOTE: The following steps will change the behavior of the Internet Explorer tile so that it launches the desktop browser version of Internet Explorer instead of the touch-screen app. These steps need to be followed and set up one time and never need to be touched again as long as you never change or allow a program to change the IE 10 configuration settings.

1. When in the Windows 8 Metro interface shown here...



2. DO NOT click on the Internet Explorer 10 tile. Instead, press the Windows key on your keyboard:

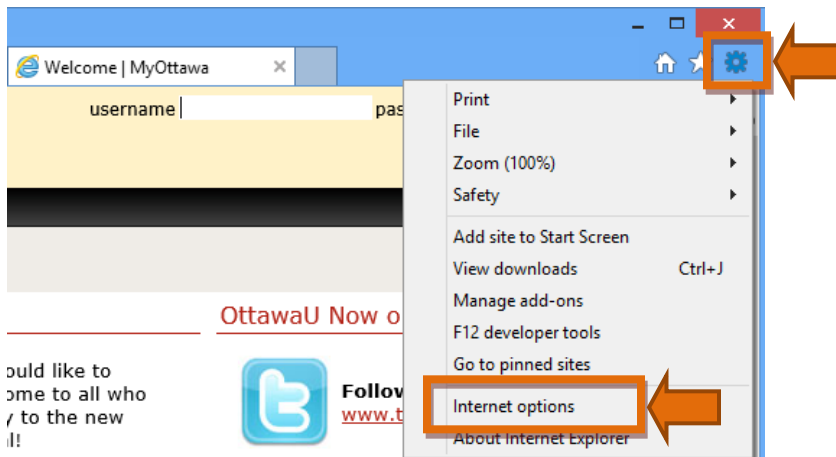


This brings up the Windows 8 “Desktop/Classic” interface.

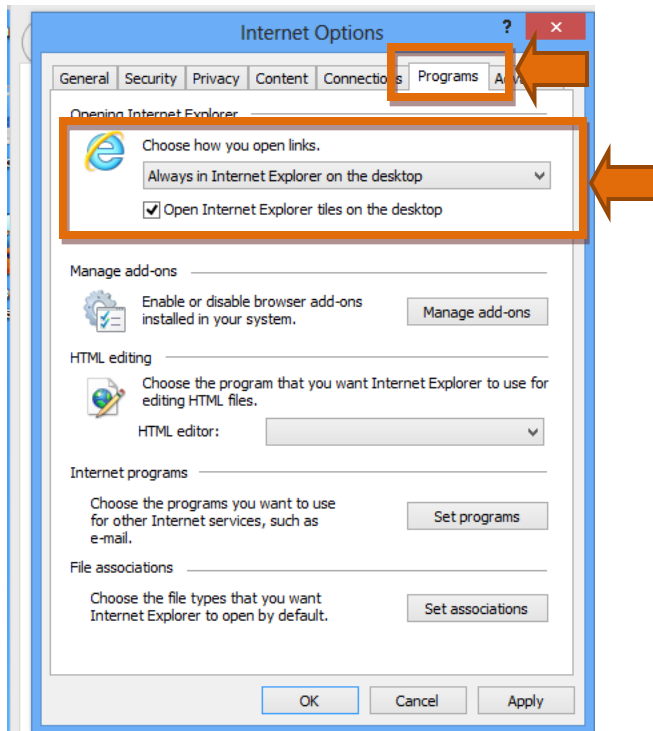
3. Open the Internet Explorer 10 desktop browser, by clicking on the icon in the system tray as shown:



4. Click on **Tools** then click on **Internet options**:



5. In **Internet options**, click the **Programs** tab.



6. Click the dropdown menu for "Choose how you open links"
7. Select "Always in Internet Explorer on the desktop".
8. Put a check in the checkbox "Open Internet Explorer tiles on the desktop".
9. Click Apply then click OK.

The Internet Explorer tile on the "Metro" interface will now default to use the **desktop** version instead of the **app** version that is optimized for touch devices.